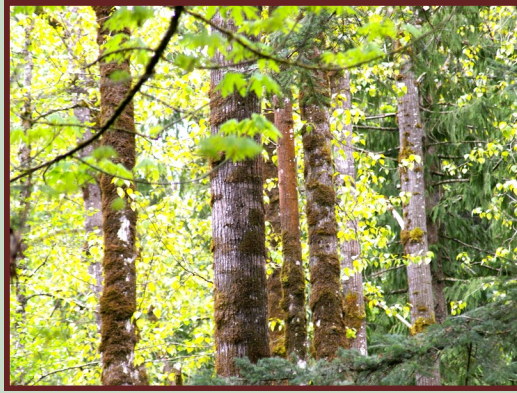


Black Cottonwood

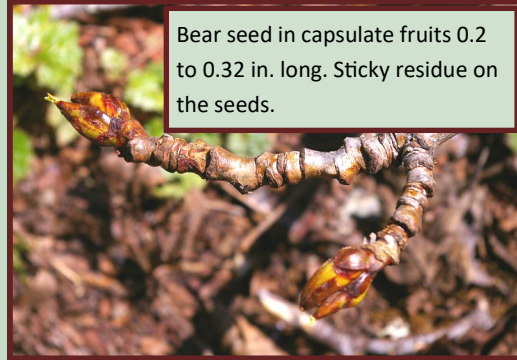
Leaves oval with rounded to heart shaped base, alternate and thick



Flowers in catkins are different for males and females, long when mature.



Bear seed in capsulate fruits 0.2 to 0.32 in. long. Sticky residue on the seeds.



Old bark deeply furrowed, dark grey.

©T. Neuffer

Populus balsamifera

PNW Native Plant

Deciduous Tree *Tall and Straight*

Cultural Uses:

Cottonwood is an excellent fuel for cooking fish and has many uses. The sticky buds are used medicinally and the leaves are boiled and used in baths for body pains. Young shoots are used to make sweat lodge frames.

Mostly Sunny



Moist to wet soils

Ecology:

Low to medium elevation forming extensive stands.

General:

This tall and fast growing deciduous tree grows up to 50m tall. The buds of the tree are sticky and fragrant and the bark becomes deeply furrowed and grey as it ages. The leaves are alternate, thick and oval with heart shaped base. Cottonwoods rarely grow far from water and serve as a great nest site for bald eagles.

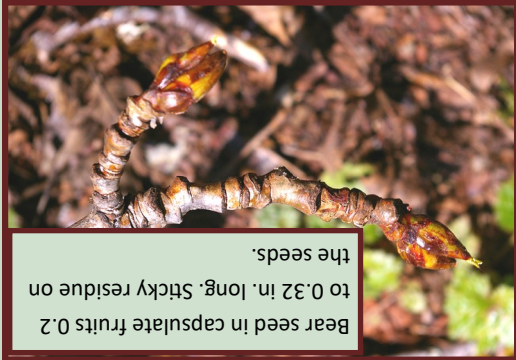
Black Cottonwood

Populus balsamifera

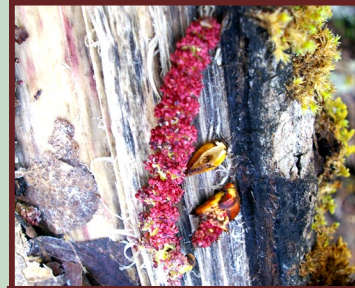
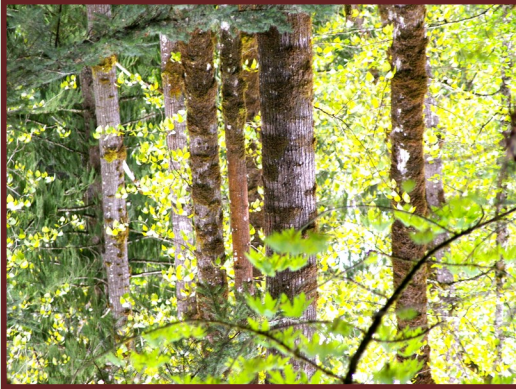
©T. Neuffer



Old bark deeply furrowed, dark grey.



Bear seed in capsulate fruits 0.2 to 0.32 in. long. Sticky residue on the seeds.



Flowers in catkins are different for males and females, long when mature.



Leaves oval with rounded to heart shaped base, alternate and thick

Deciduous Tree Tall and Straight

Cultural Uses:

Cottonwood is an excellent fuel for cooking fish and has many uses. The sticky buds are used medicinally and the leaves are boiled and used in baths for body pains. Young shoots are used to make sweat lodge frames.

Ecology:

Low to medium elevation forming extensive stands.

General:

This tall and fast growing deciduous tree grows up to 50m tall. The buds of the tree are sticky and fragrant and the bark becomes deeply furrowed and grey as it ages. The leaves are alternate, thick and oval with heart shaped base. Cottonwoods rarely grow far from water and serve as a great nest site for bald eagles.



Mostly Sunny

Moist to wet soils

PNW Native Plant